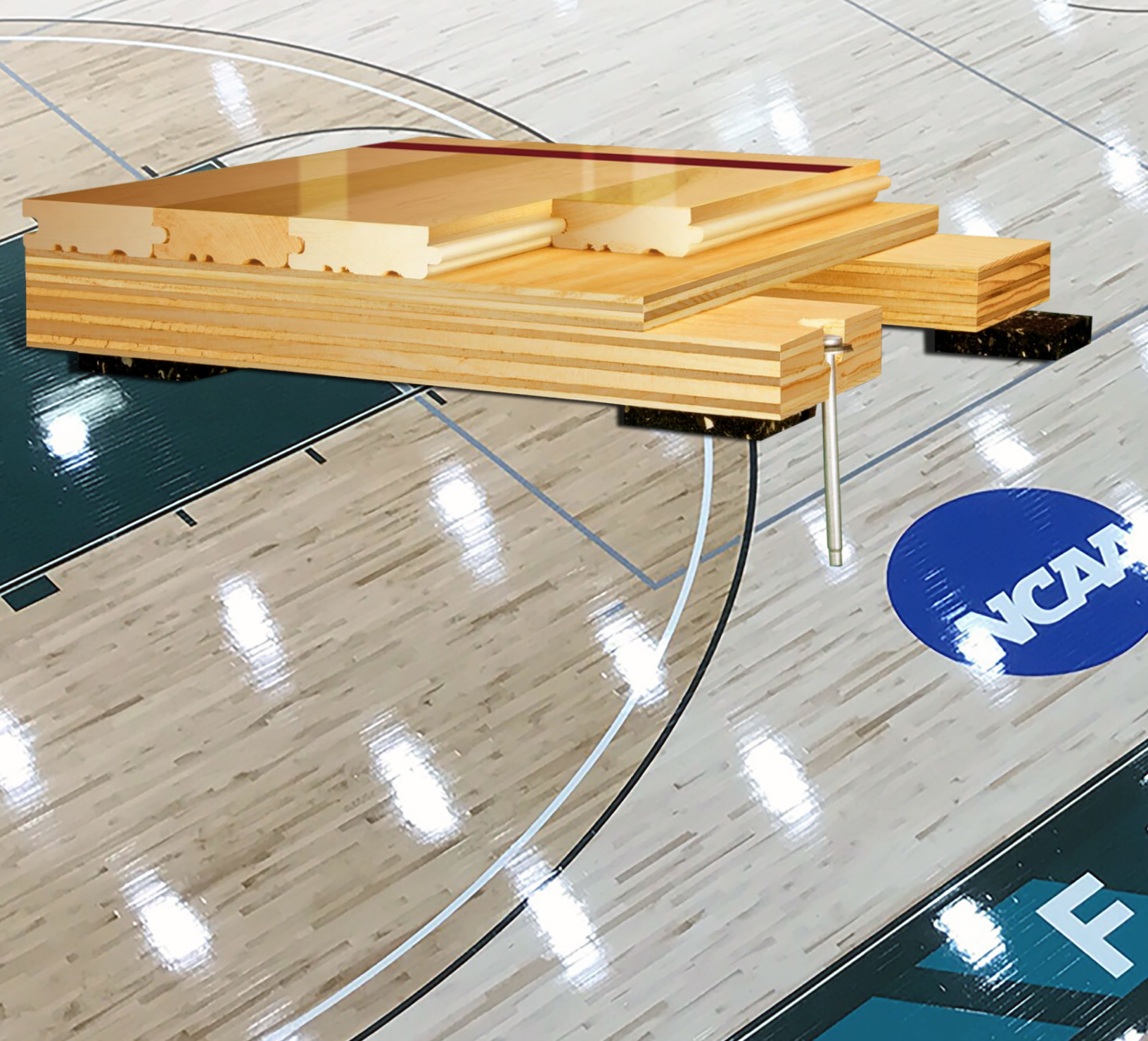


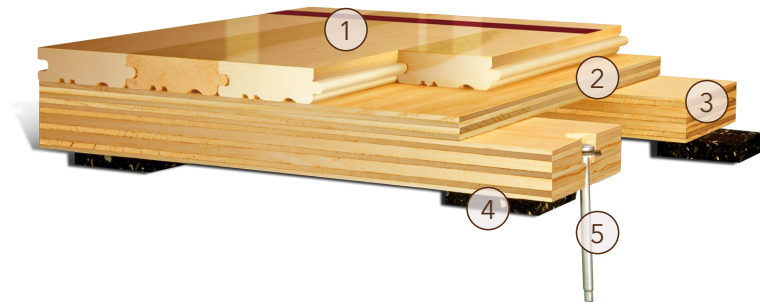
Anchored PowerSleeper™

FIXED RESILIENT SYSTEM



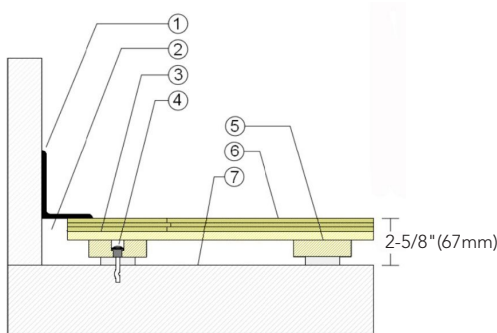
Anchored PowerSleeper™ is an anchored system that fully engages the resilient pad ensuring uniform performance and increased structural stability. This system combines pre-engineered sleepers with a plywood underlayment for greater dimensional strength and stability. It is suitable for new and retrofit sports floor applications and commercial projects.





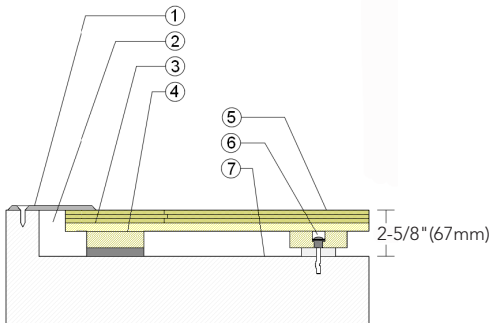
- | | |
|--|-----------------------------------|
| 1. Precision-milled Aacer Maple | 3. Pre-Engineered Plywood Sleeper |
| 2. 15/32" (12mm) Exposure 1, APA Rated Sheathing | 4. ECO Pad |
| | 5. Non-Squeak Anchor & Washer |

WALLBASE



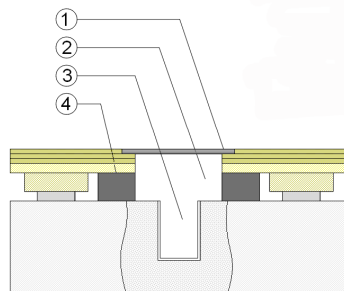
- 3" x 4" (76mm x 101mm) Vent Cove Base
- 1-1/2" (38mm) Min. Expansion Space
- 15/32" (12mm) Plywood Subfloor
- Steel Concrete Anchor & Bushing
- Engineered Plywood Sleeper with 1/2" (12mm) ECO Resilient Pad
- 25/32" (20mm) MFMA Maple Flooring
- Vapor Retarder

THRESHOLD



- 1/4" (6mm) Aluminum Threshold
- 1-1/2" (38mm) Min. Expansion Space
- 15/32" (12mm) Plywood Subfloor
- Engineered Plywood Sleeper with Solid Blocking Attached
- 25/32" (20mm) MFMA Maple Flooring
- Steel Concrete Anchor & Bushing
- Vapor Retarder

EQUIPMENT



- Floor Plate
- 1-1/2" (38mm) Min. Expansion Space at all Inserts & Electrical Penetrations
- Concrete Floor Penetration
- Solid Blocking at Insert

Anchorage

Certified

Drill and Pin



Green Status and LEED Contributors



- FSC® Certified Maple - MR
- FSC® Certified Subfloor Components - MR
- Environmental Quality - EQ
- Regional Materials - MR

Resilience

1/2" (12mm) ECO Pad
*Other pad options available.

Slab Depression

- 25/32" (20mm) Flooring - 2-5/8" (67mm)

Optional PowerSleeper Systems

Anchored PowerLoc LP
Anchored PowerSleeper
Anchored PowerSleeper SE

Optional Protection System

PowerVent™ Airflow System

Subfloor Construction

Sleeper Plywood

System Type

Fixed Resilient

Testing Laboratory Partners



It is the policy of Aacer Sports Flooring to continuously improve its line of products. Therefore, Aacer Sports Flooring reserves the right to change, modify or discontinue systems, specifications and accessories of all products at any time without notice or obligation to purchaser.