

# Dominique Wilkins Signature Series Slam Dunk

FIXED RESILIENT SYSTEM



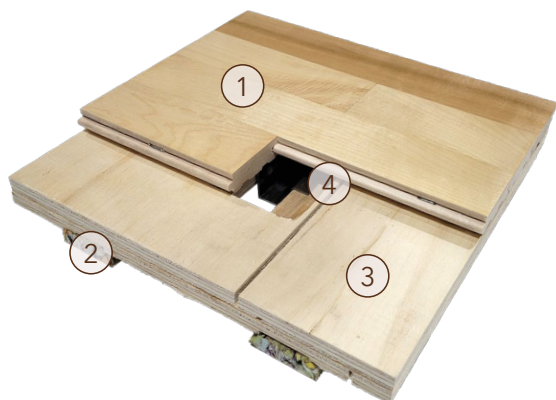
Slam Dunk features Aacer's MFMA certified maple over CNC milled, pre-manufactured subfloor panels. The panel's proprietary fluted grooves work in conjunction with resilient foam to provide optimal load response and shock absorption. Steel hat channels and concrete anchors minimize dead spots and enhance ball rebound performance.

A detailed cross-section view of the Slam Dunk flooring system. It shows a top layer of maple wood, a middle layer of CNC milled subfloor panels with fluted grooves, and a bottom layer of resilient foam. Steel hat channels and concrete anchors are visible, securing the system to the base. The background shows a basketball court floor with yellow and blue lines.

*Dominique Wilkins*

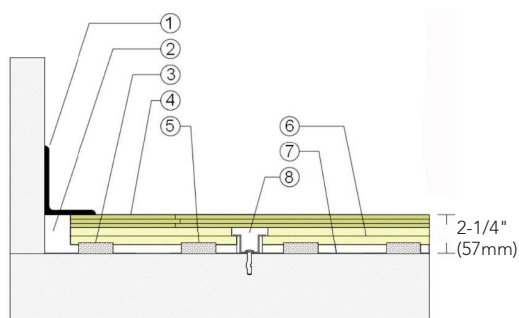


# Dominique Wilkins Signature Series Slam Dunk



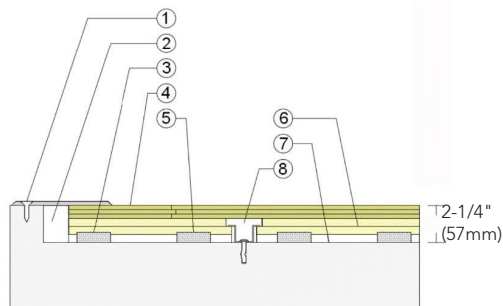
1. Precision-milled Aacer Maple
2. Resilient Cushion
3. Pre-assembled Subfloor Panel
4. Steel Channel and Concrete Anchorage

## WALLBASE



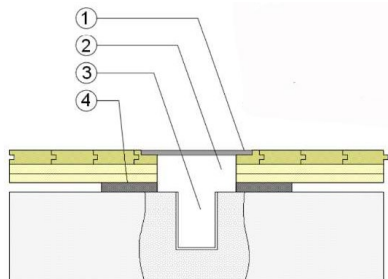
1. 3" x 4" (76mm x 101mm) Vent Cove Base
2. 1-1/2" (38mm) Min. Expansion Space
3. Recessed Subfloor Groove
4. 25/32" (20mm) MFMA Maple Flooring
5. Lineal Resilient Cushion
6. Pre-assembled Subfloor Panel
7. Concrete Surface Vapor Retarder
8. Steel Channel and Concrete Anchor

## THRESHOLD



1. 1/4" (6mm) Aluminum Threshold
2. 1-1/2" (38mm) Min. Expansion Space
3. Recessed Subfloor Groove
4. 25/32" (20mm) MFMA Maple Flooring
5. Lineal Resilient Cushion
6. Pre-assembled Subfloor Panel
7. Concrete Surface Vapor Retarder
8. Steel Channel and Concrete Anchor

## EQUIPMENT



1. Floor Plate
2. 1-1/2" (38mm) Min. Expansion Space at all Inserts & Electrical Penetrations
3. Concrete Floor Penetration
4. Solid Blocking at Insert

### Anchorage

Steel Channel and Concrete Anchorage

### Certified



### Green Status and LEED Contributors



- FSC® Certified Maple - MR
- FSC® Certified Subfloor Components - MR
- Environmental Quality - EQ
- Regional Materials - MR

### Resilience

3/4" (19mm) Open Cell Foam

### Slab Depression

- 25/32" (20mm) flooring - 2-1/4" (57mm)

### Optional DW Series Systems

Free Throw Three Point

### Subfloor Construction

Pre-assembled Panels

### System Type

Fixed Resilient

### Testing Laboratory Partners



It is the policy of Aacer Sports Flooring to continuously improve its line of products. Therefore, Aacer Sports Flooring reserves the right to change, modify or discontinue systems, specifications and accessories of all products at any time without notice or obligation to purchaser.