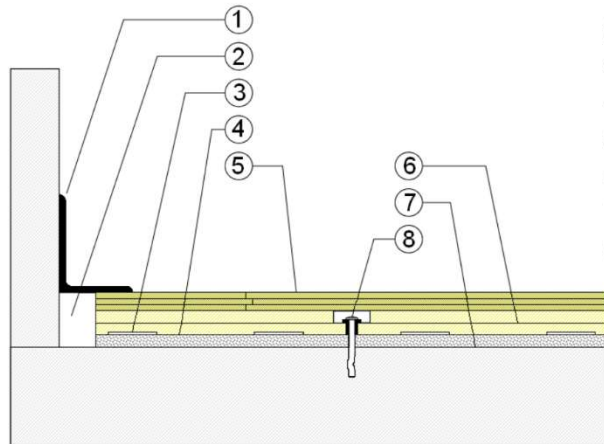


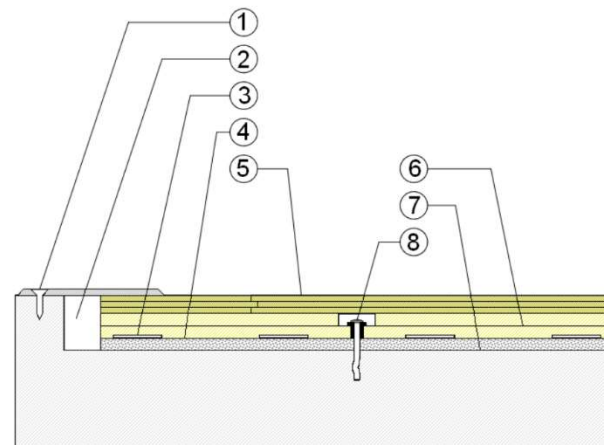
WALLBASE



1. 3" x 4" (76mm x 101mm) Vent Cove Base
2. 1-1/2" (38mm) min. Expansion Space
3. Performance Vent
4. Resilient Blanket Cushion
5. 25/32" (20mm) MFMA Maple Flooring
6. Pre-assembled Subfloor Panel
7. Concrete Surface Vapor Retarder
8. Collared Steel Anchor

2-1/4" (57mm)

THRESHOLD



1. 1/4" (6mm) Aluminum Threshold
2. 1-1/2" (38mm) min. Expansion Space
3. Performance Vent
4. Resilient Blanket Cushion
5. 25/32" (20mm) MFMA Maple Flooring
6. Pre-assembled Subfloor Panel
7. Concrete Surface Vapor Retarder
8. Collared Steel Anchor

2-1/4" (57mm)

Description: DW THREE POINT

Resilience: 9/16" OC Foam

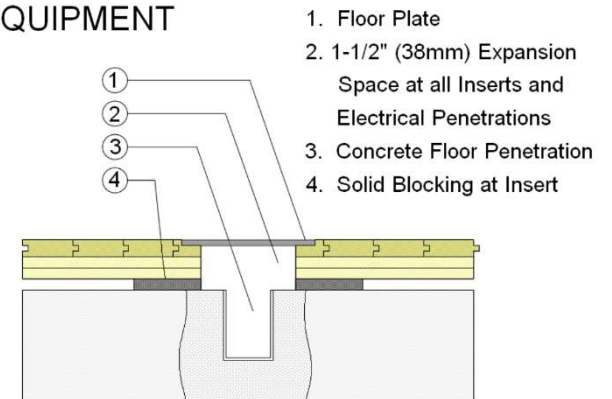
Drawn By: RR

Date: 1/1/2025

Revisions

ID	Description	By	Date

EQUIPMENT



1. Floor Plate
2. 1-1/2" (38mm) Expansion Space at all Inserts and Electrical Penetrations
3. Concrete Floor Penetration
4. Solid Blocking at Insert